



McNear Brick & Block's roots go back to 1868, making us one of the country's oldest brick manufacturers. We produce a broad selection of Face Brick, Thin Brick, and Brick Pavers in colors and textures ranging from the soft, handmade look of our Sandmold Series, to the "reclaimed" aesthetic of our Old California Series, to the crisp colors and edges of our Commercial Series and Glazed Thin Brick. All our colors and sizes are available as thin brick, which meet the Standards of ASTM C1088 Grade Exterior, and are suitable for use in freeze/thaw environments.

See the complete line of McNear brick products at [www.mcnear.com](http://www.mcnear.com).



# BrickFast™ Type McN Thin Brick Panel System



Before

## Brickfast Type McN Remodel

BrickFast™ Type McN is a perfect choice for both remodels, and new construction. Brickfast can be installed by any competent contractor in much the same way as other types of siding.



During



After



Color: Embarcadero

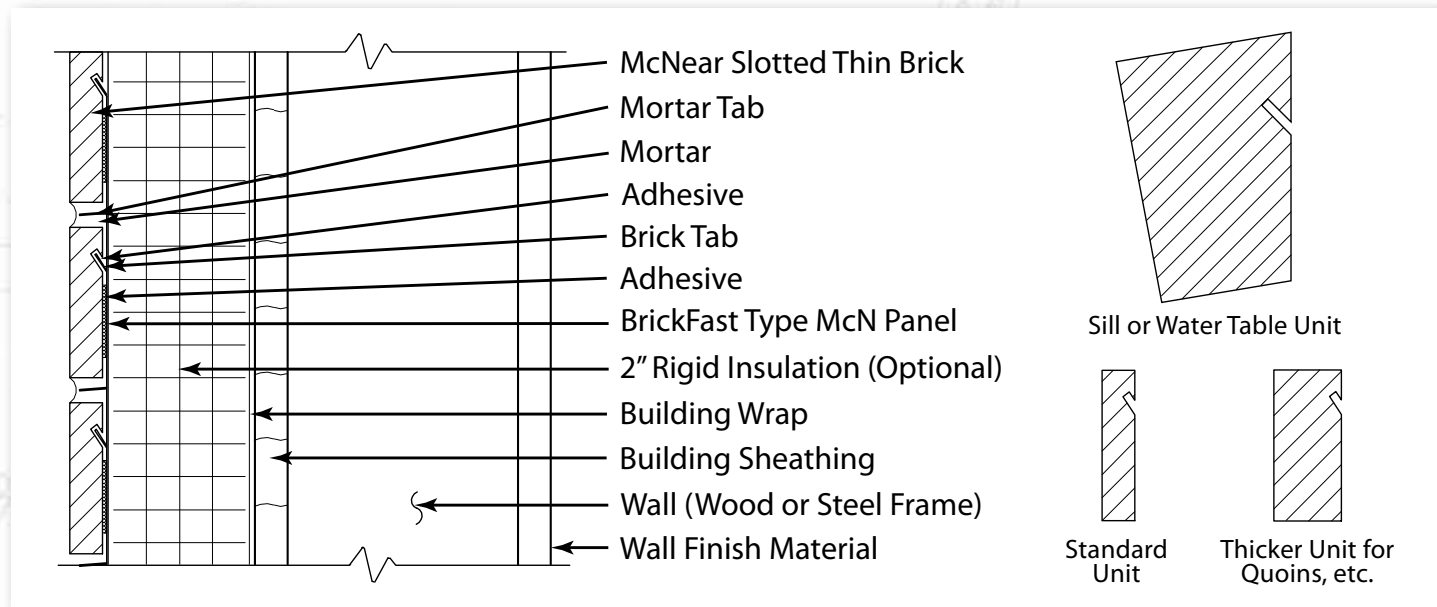
Size: Standard

- Thin Brick
- Glazed Thin Brick
- Face Brick
- Paving Brick

# BrickFast™ Type McN Panel System

BrickFast™ Type McN panels stand out from other thin brick attachment methods, as an extremely fast, simple, and secure system. The 4' by 4' BrickFast Type McN galvanized steel panels have tabs that engage matching slots cut into the backs of the bricks, creating a strong mechanical bond. While adhesive is used during installation, the long-term strength of this system comes from the mechanical attachment of the bricks to the panels.

BrickFast Type McN is used in the same way as other cladding systems, with similar methods of moisture control and insulation. It can be installed directly over weather resistive barriers, drainage planes, rigid foam insulation, insulated concrete forms, structural insulated panels, or a combination of these substrates.



- BrickFast Type McN is suitable for both new construction and remodels. It can be used on both interiors and exteriors.
- BrickFast Type McN can incorporate special shapes, such as Sills and thicker bricks for Quoins, etc.
- BrickFast Type McN panels are available for a variety of brick sizes, including: Modular (2-1/4 x 7-5/8 x 5/8), Norman (2-1/4 x 11-5/8 x 5/8), Utility (3-5/8 x 11-5/8 x 5/8), King (2-5/8 x 9-5/8 x 5/8), and Standard (2-7/16 x 8-1/8 x 5/8).
- Special BrickFast Corner panels are used, which wrap around the corners.
- BrickFast Type McN panels are made from 28-gauge, galvanized (G60) steel. Other materials (ie: 26-gauge G90) are available as special order.
- BrickFast Panels meet or exceed the standards of ASTM A653 and E330.



## 4 Simple Steps

