



CALSTONE

Interlocking Paving Stones

The Clear Choice

- **Color Blending**
- **Unique Textures**
- **Strength**
- **Wear Durability**

www.calstone.com

The Greatest Value

So your customers have chosen the best paving materials available: interlocking paving stones. True, asphalt or concrete are less expensive. But they don't offer the aesthetics or durability of paving stones. Your customers chose paving stones because they provide the greatest value and return on investment.

There are many different paving stones on the market. But if aesthetics and long term performance are important to you, then Calstone should be your product of choice. The information that follows will help you demonstrate to your customers why Calstone is the clear choice.

Don't Be Fooled by Cheap Imitations

There is a choice and a difference when selecting paving stone products. Your customers deserve the best installation company using the best hardscape products available. Time, premium raw aggregates and sands, advanced equipment and unmatched quality standards make our paving stones unique in the industry.

Following Calstone's phenomenal success with Duraface, some producers have come forward with "me too" inferior face mix paving stones. If quality and performance are the dynamics of your company, then choosing Calstone paving stones is the right decision for you and your valued customers



Paving stones were used 1000's of years ago and set the tone for the old world charm they invoke today.



What's in a Paver?

	Calstone Duraface	Through-Mix
• Superior surface wear	 YES	NO
• Patented color blending	 YES	NO
• Brighter amazing colors	 YES	NO
• Tighter uniform surface	 YES	NO
• Stronger base design	 YES	NO
• Premium raw materials	 YES	NO
• Best Value vs. Price	 YES	NO

A Short History of Paving Stones

Interlocking paving stones were developed to out-perform asphalt and concrete. Because little attention was paid to the look of the product, most of the original paving stones were a traditional brick shape and their color came only from the gray cement.



4 x 8 standard Through-Mix paver

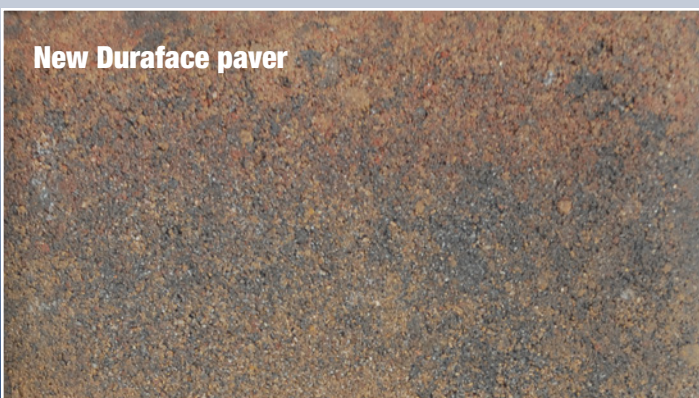
As the popularity of paving stones grew, so did the demand for more color and style options. Manufacturers soon realized that the traditional method of producing paving stones limited their ability to provide more aesthetic options.

A new and superior manufacturing process was developed to create stronger surfaces with flexibility in colors and textures. Using two separate mix designs, manufacturers could craft a highly structural paver with an added advanced top surface to satisfy aesthetic demands and increase performance.



Multiple sized, textured, Duraface paver

There is a difference...Through Mix vs. Duraface Technology



Duraface paving stones surpass all other paving stones in...

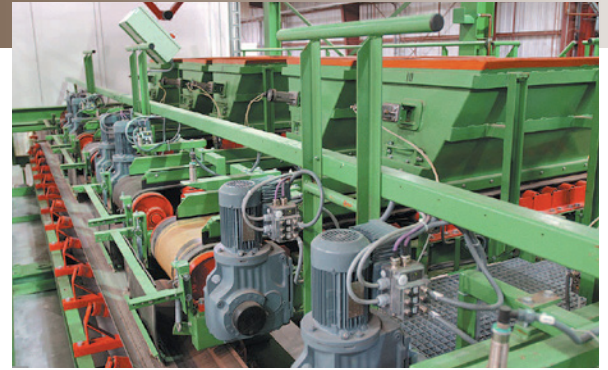
- **Color Blending**
- **Unique Textures**
- **Strength**
- **Wear Durability**

The Recipe for Quality

Calstone's Dual-Mix Design

Other paving stones are made using a “through-mix” process, which requires adding more sand to compensate for the use of smaller sized aggregates which drastically reduces strength. Over a very short amount of time, the aggregates at the surface of through-mixed paving stones are exposed, due to traffic and the elements.

Calstone paving stones are made with a patented color-blending process and superior Duraface technology. This surfacing method out-performs “through-mix” paving stones in color vibrancy, surface texture, strength and wearability.



Calstone's patented 6-color blending process.
Patent # US 7,572,048 B2

Calstone paving stones are made using a two-step process:

Step 1: Create a paver base design using a higher loading of structural aggregates; increasing compressive and flexural strength within the paver unit.

Step 2: Create the Duraface wearing surface. Calstone use 70% more cement and premium white cement to bond the specialty sands. We also use nearly triple the amount of coloring pigments to embolden blends. Which we then mix to achieve our unique five- and six-colored paving stone blends.

Duraface vs. Through-Mix

- The Duraface paving stone surface has over three times the value of a Through-Mix paving stone
- Duraface has twice as much cement content
- Duraface has three times the amount of color
- Duraface premium specialty sands insure dense, tight surfaces
- Duraface's use of premium white cement creates enhanced color

Duraface



Through-Mix

