



AZUL

Monica



BUILDING MATERIALS LANDSCAPE SUPPLIES
&
GENERAL ENGINEERING

Azul Monica

FINISHES

Durable, trendy, and high quality are just a few ways to describe our Azul Monica! Azul Monica is a natural stone that has been carefully crafted to be the design element your home needed!

AZUL MONICA IS AVAILABLE IN 9 FINISHES



BRUSHED



FLAMED



FLAMED + BRUSHED



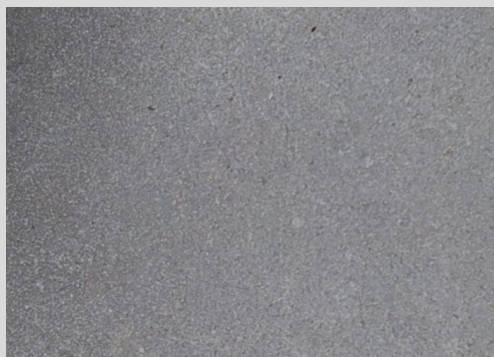
HONED



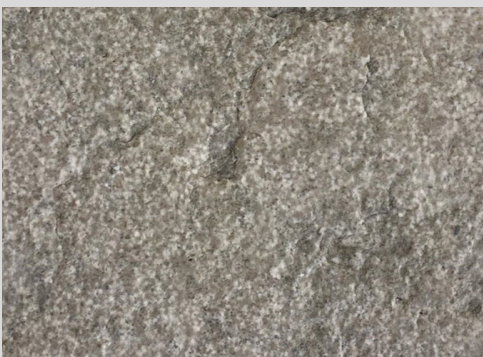
POLISHED



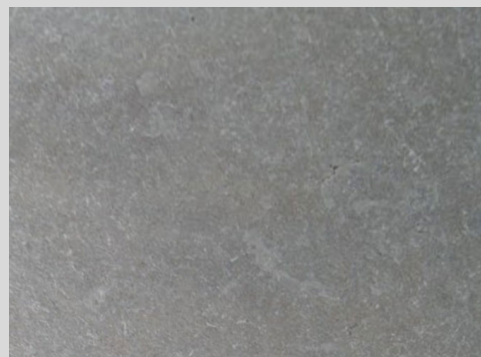
MONASTAIRE



SANDBLASTED +
BRUSHED



SHOTBLASTED +
BRUSHED



TUMBLED

Azul Monica PAVERS

Pave the way with our natural stone pavers! Bring warmth and class to your backyard with our neutral toned Azul Monica Pavers.



SPECIFICATIONS SIZES*




THICKNESS:	WIDTH:	LENGTH:
1"	12"	12"
	12"	18"
	12"	24"
	18"	18"
	18"	24"
	18"	36"
	24"	24"
	24"	36"
	36"	36"
3/4"	16"	random

*The listed are SBI's stocking sizes. Other sizes are available through custom orders.

Azul Monica Flamed + Brushed



CONTACT US:

-  (707) 975-0216
-  sales@sbimaterials.com
-  sbimaterials.com

Azul Monica T R E A D S

Make the steps toward the right direction! Use our Azul Monica Treads to enhance your outdoor steps! The natural stone will truly make an impact on the exterior of your home.



SPECIFICATIONS SIZES*



THICKNESS:	WIDTH:	LENGTH:
2"	14"	48"
	14"	72"
	16"	48"
	16"	72"
	18"	48"
	18"	72"
	24"	48"
	24"	72"

*The listed are SBI's stocking sizes. Other sizes are available through custom orders.

Azul Monica Flamed + Brushed



CONTACT US:

-  (707) 975-0216
-  sales@sbimaterials.com
-  sbimaterials.com

Azul Monica

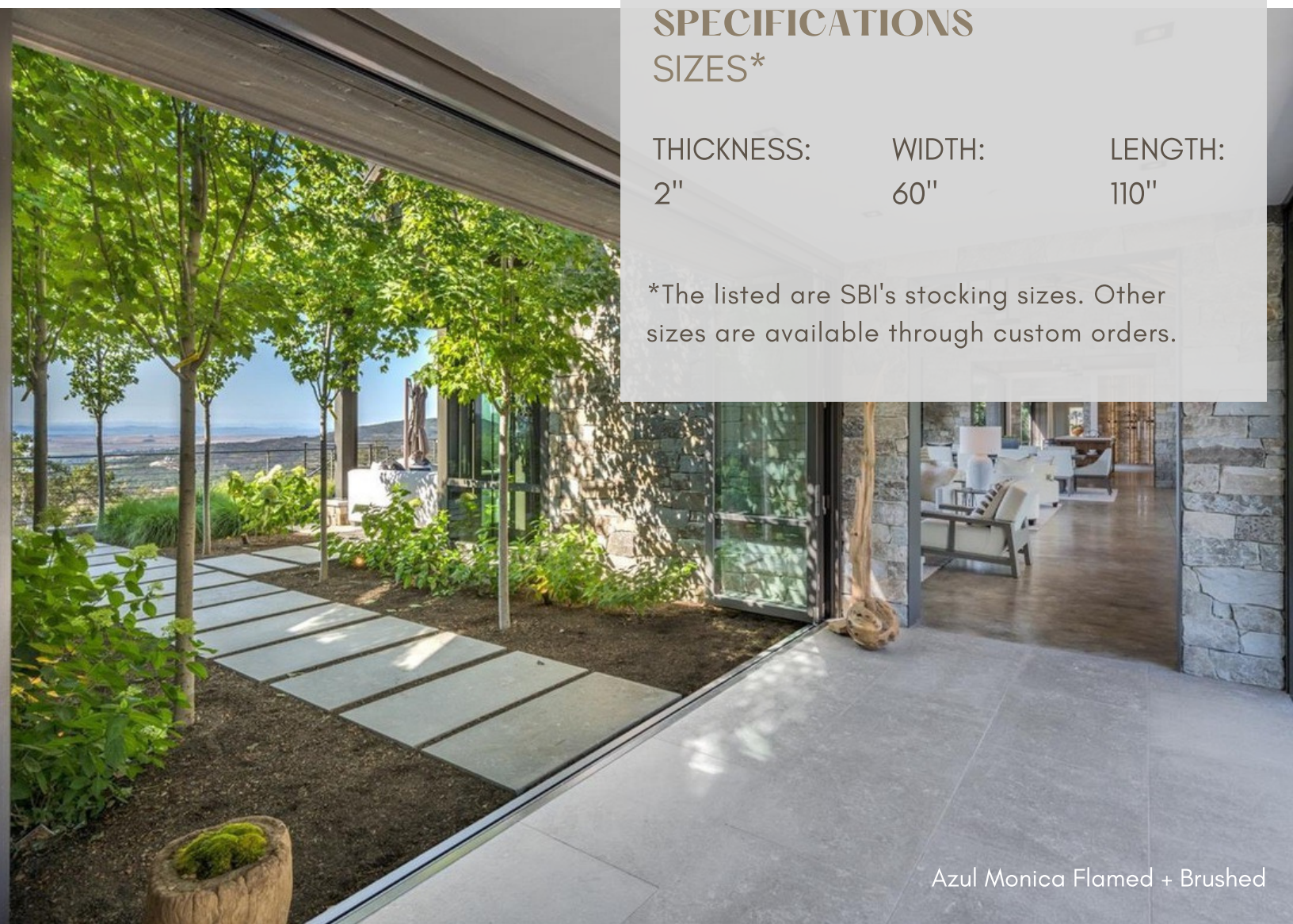
S L A B S

Transform your home into the outdoor oasis that you have dreamed of! Our Azul Monica natural stone slabs will be the perfect addition to your outdoor living space!

SPECIFICATIONS SIZES*

THICKNESS:	WIDTH:	LENGTH:
2"	60"	110"




*The listed are SBI's stocking sizes. Other sizes are available through custom orders.



Azul Monica Flamed + Brushed



CONTACT US:

-  (707) 975-0216
-  sales@sbimaterials.com
-  sbimaterials.com